

SPEC



DESIGNER AUDIO

REAL-SOUND AMPLIFIER

RSA-M99

Operation Manual

Read through this operation manual before use so you will know how to operate your model properly. After you have finished reading the manual, put it in a safe place for future reference.

RSA-M99 REAL-SOUND AMPLIFIER

The RSA-M99 is a high-performance, highly efficient PWM class-D amplifier. It features power MOS-FETs that achieve highly accurate current switching in the power stage, and high-voltage gate driver ICs with excellent time-axis control. The exceptional power handling performance of the class-D device ensures dynamic real sound even when driving low-efficiency speakers. Furthermore, the sweet and rich tonal character recalls the tone of the best triode tube amplifiers and enables ideal real sound experience.

Oil capacitors reproducing both tonal characteristics of vintage amplifiers and modern sound

The excellent PWM switching that makes it possible to maximize amplifier device potential, natural harmonics, and the dynamic and rich sound on a wide spectrum owe a lot to the individual parts of the low-pass filter in the final stage of the amplifier. It employs hermetically sealed paper-oil filled capacitors, a type that became fairly rare nowadays, made especially for the RSA-M99 by Arizona Capacitors, Inc. These capacitors produce a distinctive and superior sound that combines the deep tonal characteristics of those old tube amplifiers with a modern vivid sound. Furthermore, coils are low-loss toroidal coils featuring special ring cores that have been carefully chosen through listening tests to guarantee a natural sound with no distortion.

Outstanding power source that ensures high quality sound

In order to maximize the potential of the unprecedented high performance of this amplifier (power efficiency in the power stage at maximum output of 96%), we daringly employed a classical and very simple plus/minus power source composed of a minimal number of high quality components, such as only transformers, bridge-diodes and capacitors. The real sound of RSA-M99 has been achieved thanks to instantaneous power supply function and to the high quality of power supply parts that could be obtained only by paying the utmost attention to the audio characteristics of each individual part.

◇ **Power source capacitors**

Multiple electrolytic capacitors with different audio characteristics are used in parallel to ensure a sufficient rectification capacity while providing a well-balanced sound across the entire range. Furthermore, they ensure a smooth sound with an excellent rise by improving the equivalent series resistance (ESR). In addition, high-voltage paper-oil filled capacitors are connected in parallel to achieve a precise and beautiful sound over the mid to high ranges.

◇ **Rectifier**

High-voltage and high-current newly-developed SiC (silicon carbide) Schottky diodes, designed to completely eliminate switching noise, achieve not only transparent but also very powerful sound

◇ **R-core transformer**

High-capacity R-core transformers are employed. Because the unnecessary leakage of magnetic flux is very low, responsiveness to instantaneous high voltage is excellent, thereby realizing high speed sound with an excellent rise.

Thorough internal shielding for an electromagnetically clean space

High-frequency electromagnetic waves generated by the power source and other circuitries inside an audio device negatively affect the sound. An electromagnetically cleaned environment is ensured inside the RSA-M99 by blocking the interaction between circuitries using a special shield case made of steel sheets equipped on the power source transformer, the power amplifier part and the low-pass filter. This thorough electromagnetic shielding makes the pure sound characteristic of the RSA-M99 possible.

Only high quality parts

High quality parts have been selected so the RSA-M99 can provide continued enjoyment over its long life. Parts necessary for high quality sound were carefully selected and employed, including a high-capacity power switch with a locking mechanism, industrial use selector and custom-made volume knob with excellent feel and high reliability, and RCA jacks with high-value rhodium plating.

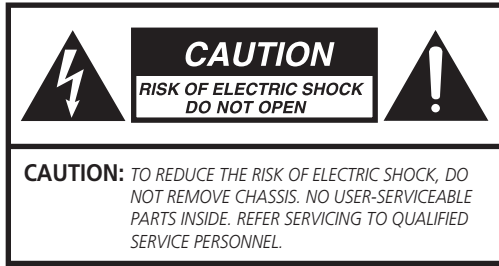
Chassis and insulators to reproduce natural resonance

Natural wood with beautiful resonance is used for the chassis and insulators. Solid laminated board of European spruce, known as a tonewood, is used for the chassis in order to absorb undesirable vibrations of the mainframe. Insulation using a minimum surface was made possible through round insulators made of painted maple, a strong wood from Hokkaido in Japan. In addition to the stable 3-point support of the RSA-M99, it ensures no loss in the amplifier sound quality and full performance even when mounted in an audio rack.

Power amp mode

The RSA-M99 is a preamplifier with an extremely simple structure composed of a selector and volume control. It can also be used as a power amplifier by connecting it to a preamplifier or an AV amplifier. In this case, set the switch on the rear panel to "POWER AMP" mode. The volume knob operation will be disabled and the gain will be fixed so that the volume control can be operated only on the preamp or AV amplifier side.

Safety Precautions



AVIS: RISQUE DE CHOC ELECTRIQUE-NE PAS OUVRIR.



THIS SYMBOL IS INTENDED TO ALERT THE USER TO THE PRESENCE OF NON-INSULATED "DANGEROUS VOLTAGE" WITHIN THE PRODUCT'S ENCLOSURE THAT MAY BE OF SUFFICIENT MAGNITUDE TO CONSTITUTE A RISK OF ELECTRIC SHOCK TO PERSONS.



THIS SYMBOL IS INTENDED TO ALERT THE USER TO THE PRESENCE OF IMPORTANT OPERATING AND MAINTENANCE (SERVICING) INSTRUCTIONS IN THE LITERATURE ACCOMPANYING THE UNIT.

WARNING

Exposure to extremely high noise levels may cause a permanent hearing loss.

Individuals vary considerably to noise induced hearing loss but nearly everyone will lose some hearing if exposed to sufficiently intense noise for a sufficient time.

Operating Environment

Operating environment temperature and humidity: +5°C to +35°C (+41°F to +95°F); less than 85%RH (cooling vents not blocked)

Do not install this unit in a poorly ventilated area, or in locations exposed to high humidity or direct sunlight (or strong artificial light)

WARNING

This equipment is not waterproof. To prevent a fire or shock hazard, do not place any container filled with liquid near this equipment (such as a vase or flower pot) or expose it to dripping, splashing, rain or moisture.

POWER-CORD CAUTION

Handle the power cord by the plug. Do not pull out the plug by tugging the cord and never touch the power cord when your hands are wet as this could cause a short circuit or electric shock. Do not place the unit, a piece of furniture, etc., on the power cord, or pinch the cord. Never make a knot in the cord or tie it with other cords. The power cords should be routed such that they are not likely to be stepped on. A damaged power cord can cause fire or give you an electrical shock.

Check the power cord once in a while.

European model only



If you want to dispose this product, do not mix it with general household waste. There is a separate collection system for used electric products in accordance with legislation that requires proper treatment, recovery and recycling.

Private households in the member states of the EU, in Switzerland and Norway may return their used electric products free of charge to designated collection facilities or to a retailer (if you purchase a similar new one).

For countries not mentioned above, please contact your local authorities for the correct method of disposal.

By doing so you will ensure that your disposed product undergoes the necessary treatment, recovery and recycling and thus prevent potential negative effects on the environment and human health.

Contents

Chapter 1 Introduction

Check included items	4
Installing this product	4
Regarding installation	4

Chapter 2 Connections

Connections diagram	5
How to connect the speaker cords	7
How to connect balanced (XLR) cables	7
How to connect audio cords	8
How to connect the power cord	8

Chapter 3 Part Names

Front panel	9
Rear panel	10

Chapter 4 How to Operate

Playback steps	11
----------------------	----

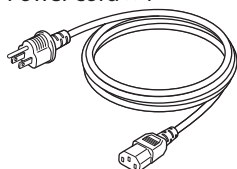
Chapter 5 Other

Troubleshooting	13
Care and maintenance	13
Specifications	14
Separately sold accessories	14
Warranty and after sales service	15

Chapter 1 Introduction

Check included items

- Power cord × 1



- Operation manual (this book)

Installing this product

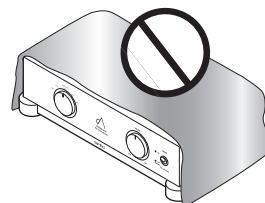
- Be sure to install this product on a flat, stable surface.
- Do not install this product in the following locations:
 - On top of a television (the image may warp)
 - Near a cassette deck or other magnetism emitting device (the audio may be adversely affected)
 - In a location hit by direct sunlight
 - In a moist location
 - In high or low temperature locations
 - In a location with vibration
 - In a location with much dust or tobacco smoke
 - In kitchens or other locations where fumes are emitted and oil is used

Regarding installation



Caution

- Never place items on top of this product, cover it with a sheet, or use it when its heat radiation is obstructed. Abnormally high temperatures may damage the product.



Chapter 2

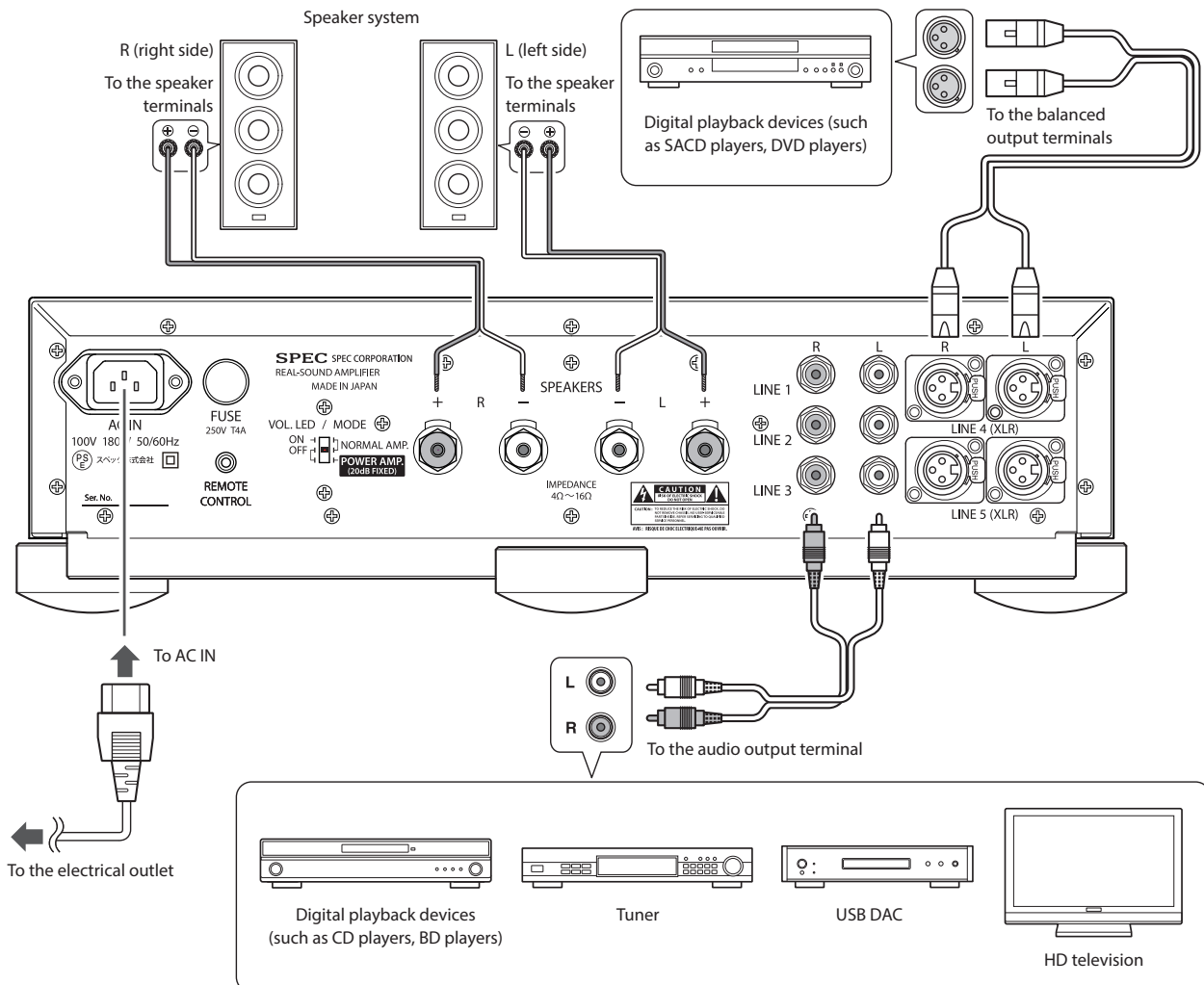
Connections

Connections diagram

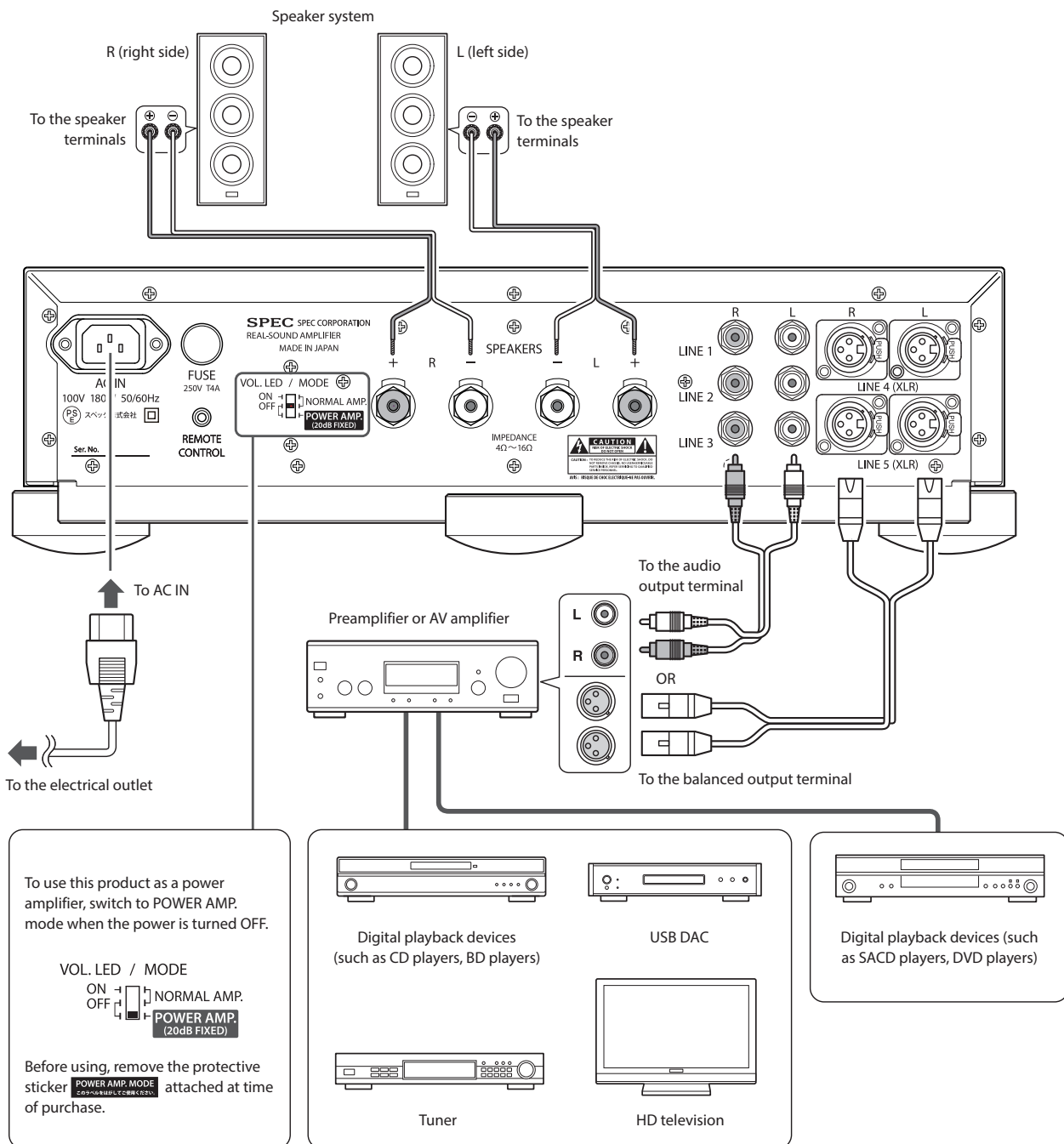
This product can be used as a standalone pre-main amplifier, or used as a power amplifier in conjunction with your current preamplifier (AV amplifier).

**Important**

- When connecting devices or making changes, be sure to turn the POWER switch OFF and disconnect the power cord from the electrical outlet. Plug in the power cord last.
- If an extremely loud signal is input to this product, there is a danger that noise will be generated and cause damage. In such a case, lower the input signal level.

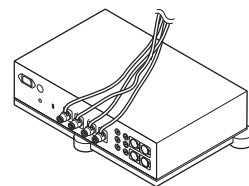
When using this product as a pre-main amplifier

When using this product as a power amplifier



Caution

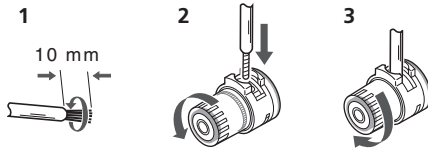
- In POWER AMP. mode the VOLUME (level adjustment knob) of the product becomes inactive, and the level is fixed at approximately 20dB. To prevent unexpected playback at a loud volume level turn the preamplifier (AV amplifier) level all the way down when turning on the power.
- If the connecting speaker cords are bent and placed on top of this product as depicted on the right, the speakers may output hum noise due to the influence of the magnetic field of the electrical transformer. Do not place the connecting speaker cords in this way.



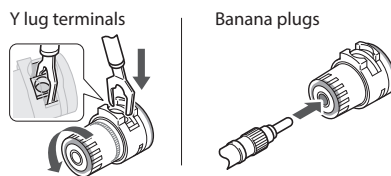
How to connect the speaker cords

The connection terminals are red for positive (+) and black for negative (–).

- 1** Twist the wire.
- 2** Loosen the speaker terminal, and insert the speaker cord.
- 3** Once the speaker cord is inserted, tighten and secure the speaker terminal.



The connection terminals on this product are also compatible with Y lug terminals and banana plugs.



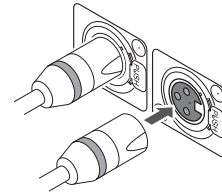
Caution

- Use speakers with nominal impedance of 4Ω to 16Ω .
- Connect accurately the + and – terminals between the speakers and this product.
- Do not allow unshielded center wire from the terminals to stick out and make contact with each other. If the center wires touch the device may break.
- Use sufficient current capacity speaker cord and be sure to make connections that are not loose and do not short. Using low current capacity connecting cords or making imperfect connections may affect playback audio and can cause overheating or short circuits.
- High voltage is output from the speaker terminals. To avoid the danger of electrical shock, be sure to unplug the power cord before making speaker connections.

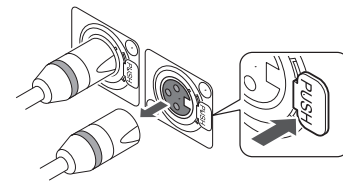
How to connect balanced (XLR) cables

Connect the left and right balanced input terminals of this product to the respective left and right balanced output terminals of the product to be connected.

Match the orientation of the XLR plug to this product's balanced input terminal, and insert until a click is heard.

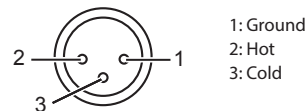


When disconnecting an XLR plug, press the latch lever (the part with "PUSH" inscribed on it) while pulling the cable. Use caution, as forceful disconnection may damage the unit.



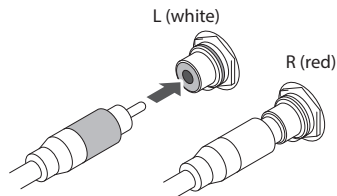
Note

- The pin positioning of the balanced input terminal of this product is depicted below. Confirm that the product to be connected is compatible with the pin positioning of this product. For further details, consult the operation manual included with the product to be connected.



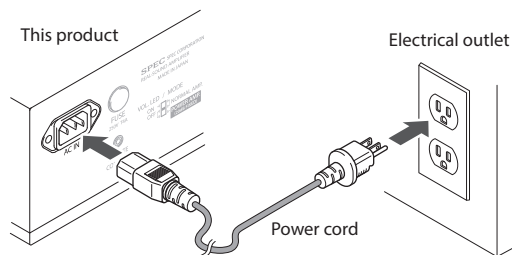
How to connect audio cords

Connect the white RCA plug (left) to the left side input terminal with the black (or white) line, and the red RCA plug (right) to the right side input terminal with the red line. Press firmly to push the plugs all the way in.



How to connect the power cord

Once all connections have been made, connect the included power cord to the AC IN terminal of this product and to the residential electrical outlet. Press firmly to push the plug all the way in.



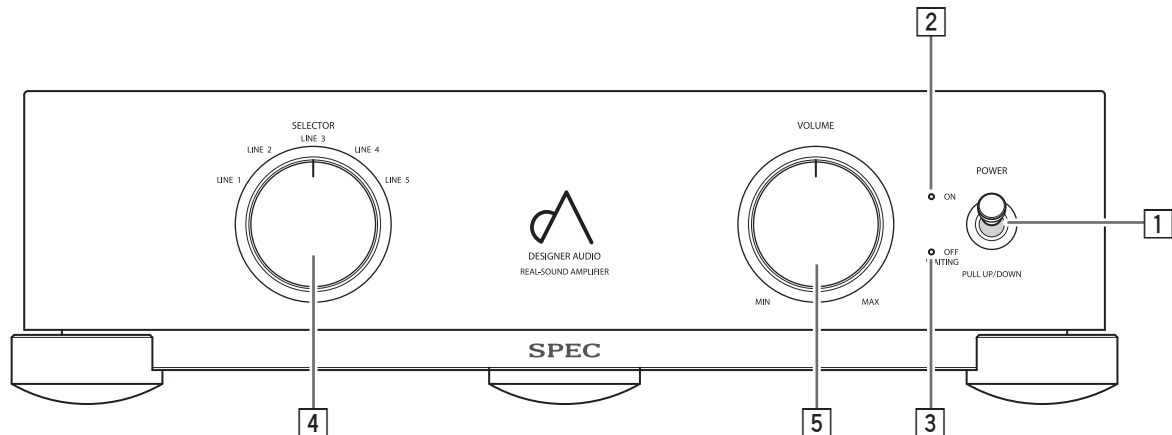
Caution

- The power cord for this product is removable, but please refrain from using power cords other than the cord included (3P plug-in socket type with electrical current capacity: 7A).
- Never insert the ground wire from the AC CONVERSION PLUG into the electrical outlet.

Note

- When not using this product for extended periods, be sure to turn the POWER switch OFF or unplug the power cord from the electrical outlet.
- Turn the POWER switch OFF before unplugging the power cord.
- The power consumption of this product varies greatly depending on the volume level of the playback audio signal. For satisfactory music playback, connect to an electrical outlet with sufficient capacity. (Connecting to a low capacity electrical outlet creates the danger that the connection will overheat.)
- If the residential power supply is cut off due to a power outage, the state of this product will be as follows when power is restored.
 - If the POWER switch is ON when power is restored
→ The product returns to its state prior to power restoration.
 - If the POWER switch is OFF when power is restored
→ The product is in the normal power OFF state.

Front panel



1 POWER switch

Turns power ON and OFF.

Pulling the power switch releases the lock. To turn on the power, raise up the power switch while pulling out on it. To turn off the power, lower the power switch while pulling out on it.

2 ON indicator

Shines warm yellow when this product is on.

3 OFF (WAITING) indicator

Shines red for several seconds following power-up. Once the product is operational, this indicator turns off and the ON indicator shines warm yellow. It also shines for several tens of seconds when the power is shut off. During this time this product is preparing to power off, so please wait until the indicator light goes out.

4 LINE SELECTOR (input switching knob)

Selects the playback device (LINE 1-LINE 5).

5 VOLUME (level adjustment knob)

Adjusts the volume level.



Note

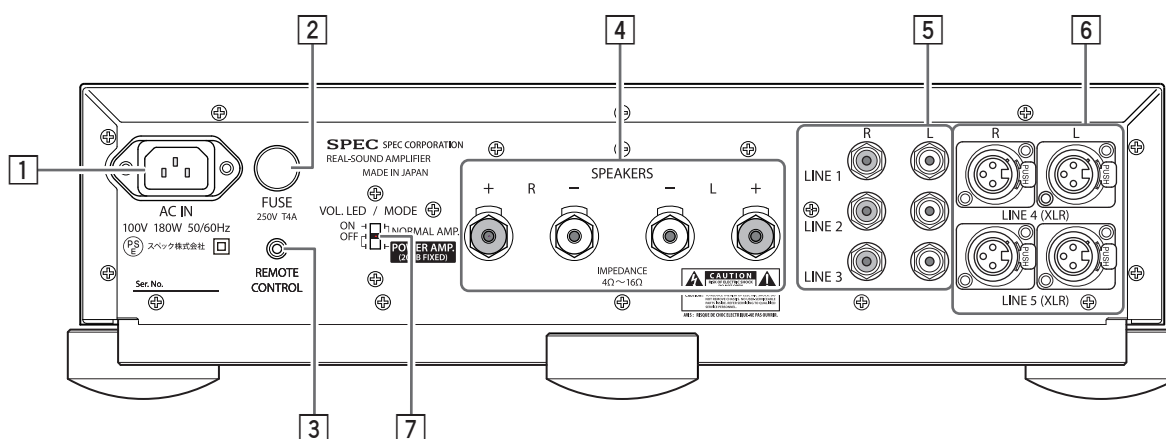
- This product contains a high quality electrical volume IC that is high precision and ultra low noise, with the result that audio quality is not affected depending on the VOLUME (level adjustment knob) position.



Caution

- When turning the product on immediately after turning it off, check to make sure that the OFF (WAITING) indicator has turned off completely. Turning the power on while the OFF (WAITING) indicator is lit can cause malfunction.

Rear panel



① AC IN terminal

Connect the included power cord. (→ pages 5, 6, 8)

② Fuse

The fuse may break if something abnormal occurs to the product. Contact us if the fuse breaks. (→ page 15)

③ REMOTE CONTROL terminal

Connect the (separately sold) remote control. Contact us for details regarding the (separately sold) remote control. (→ page 14)

④ Speaker terminal (R (right) channel)

Speaker terminal (L (left) channel) (→ pages 5 to 7)

⑤ Audio input terminals (LINE 1 - LINE 3)

RCA type input terminal. (→ pages 5, 6, 8)

⑥ Balanced input terminal (LINE4, LINE5)

XLR type input terminal (female). (→ pages 5 to 7)

⑦ VOL. LED/MODE switch

Switches the VOLUME (level adjustment knob) and the LINE SELECTOR(input switching knob) brightness and volume level adjustment mode. (→ see below)

**NOTE (Regarding the VOL. LED/MODE switch)**

The VOLUME (level adjustment knob) and the LINE SELECTOR (input switching knob) brightness (①) and volume level adjustment mode (②, ③) can be set using the dual purpose VOL. LED/MODE switch.

① Set the VOLUME (level adjustment knob) and the LINE SELECTOR(input switching knob) brightness to either ON (light on) or OFF (no light) according to your preference. The switch is set to ON (light on) at time of purchase.

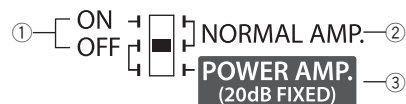
② Set to NORMAL AMP. when using as a pre-main amplifier.

③ Set to POWER AMP. when using as a power amplifier. Before using, remove the protective sticker (POWER AMP. MODE) attached at time of purchase.

* In POWER AMP. mode the VOLUME (level adjustment knob) and the LINE SELECTOR (input switching knob) of the product becomes inactive, and the level is fixed at approximately 20dB. Level adjustments must be performed on the preamp (AV amp) side.

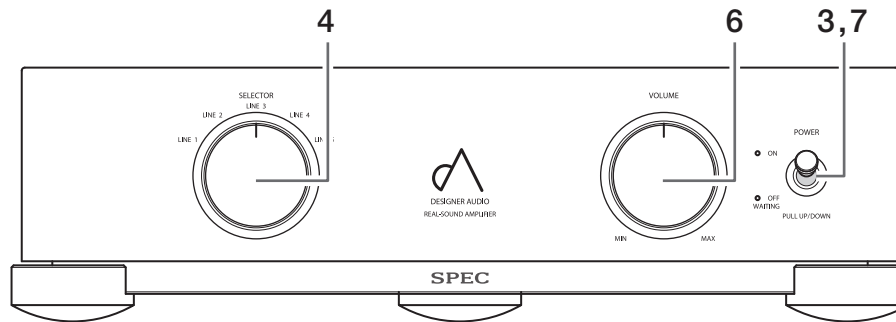
* When the VOL. LED/MODE switch is set to POWER AMP., the VOLUME (level adjustment knob) and the LINE SELECTOR (input switching knob) brightness is set only to OFF (no light).

VOL. LED / MODE

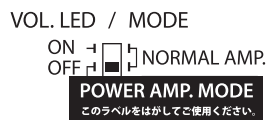


Playback steps

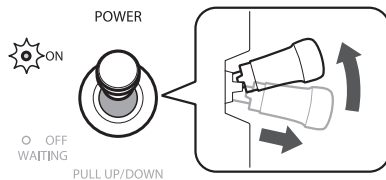
When using this product as a pre-main amplifier



- 1** Check that the VOL. LED/MODE switch on the rear panel of this product is set to NORMAL AMP.



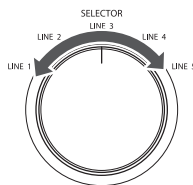
- 2** Turn on the power of the playback device.
- 3** Check that the volume level of this product is turned down, and lift up the front panel POWER switch while pulling out on it to turn on the power.



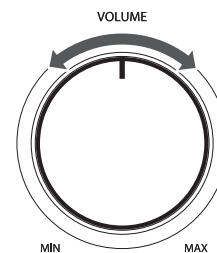
Check that the ON indicator on the body front panel is lit.

- 4** Select the input to this product.

Rotate the LINE SELECTOR to select the terminal (LINE 1 - LINE 5) to which the playback device is connected.

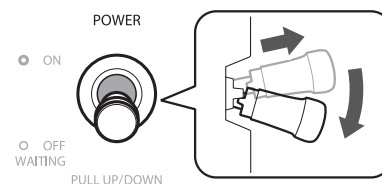


- 6** Rotate the VOLUME (level adjustment knob) left and right to set the audio level.



- 7** When playback is finished, lower the audio volume level and push down the front panel POWER switch while pulling out on it to turn off the power.

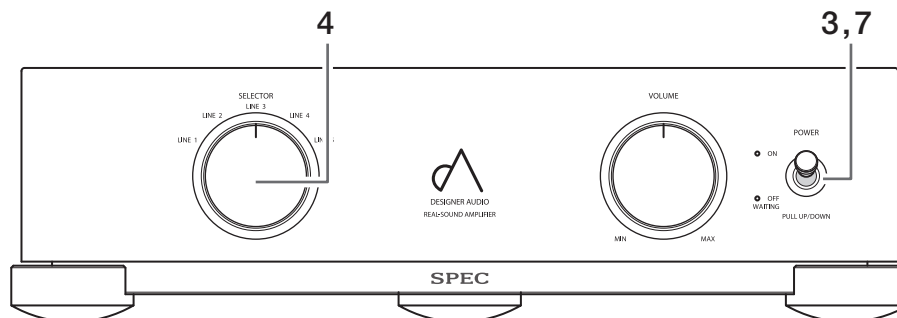
Be sure to lower the audio volume level.



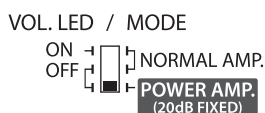
Caution

- When turning the product on immediately after turning it off, check to make sure the OFF (WAITING) indicator has gone off completely. (→ page 9)

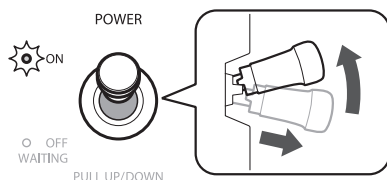
When using this product as a power amp



- 1** Set the VOL. LED/MODE switch on the rear panel of this product to POWER AMP.



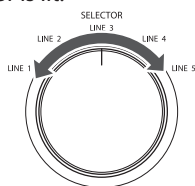
- 2** With the preamplifier (AV amplifier) volume level turned all the way down, turn on the power of the playback device and preamplifier (AV amplifier).
- 3** Lift up the front panel POWER switch while pulling out on it to turn on the power.



Check that the front panel ON indicator is lit.

- 4** Select the input to this product.

Rotate the LINE SELECTOR to select the terminal (LINE 1 - LINE 5) to which the preamplifier (AV amplifier) is connected.



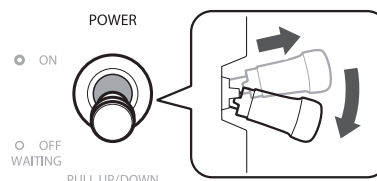
- 5** Select the input on the preamplifier (AV amplifier) side and begin playback on the playback device.

- 6** Perform volume level adjustments during playback on the preamplifier (AV amplifier) side.

When the VOL. LED/MODE switch is set to POWER AMP, the volume level is fixed at approximately 20dB regardless of the VOLUME (level adjustment knob) position, so volume level adjustments cannot be made on this product.

- 7** When playback is finished, turn the preamplifier (AV amplifier) volume all the way down, and shut off the power of this product first, then the preamplifier (AV amplifier) power.

Be sure to turn the preamplifier (AV amplifier) volume level all the way down. To turn this product off, push down the POWER switch while pulling out on it.



Caution

- When turning the product on immediately after turning it off, check to make sure that the OFF (WAITING) indicator has gone off completely. (→ page 9)

Troubleshooting

If you think this product may be broken, check the following troubleshooting items. Some minor operational errors can make the product appear to be broken.

Potential causes other than this product should also be considered. Check the other devices being used as well as all simultaneously operated electrical devices. If the following instructions do not help even on multiple inspections, contact us. (→ page 15)

Issue	Cause/Treatment	Reference
The power does not turn on.	<ul style="list-style-type: none"> Is the power plug disconnected from the electrical outlet? → Correctly insert the power plug into the outlet. 	p. 8
	<ul style="list-style-type: none"> Is the power plug disconnected from the AC IN terminal? → Correctly insert the power plug. 	p. 8
	<ul style="list-style-type: none"> If the power will not turn on even with correctly connecting the power plug, the fuse may be broken. → Contact us for consultation. 	p. 15
There is no sound.	<ul style="list-style-type: none"> Is the connecting cord disconnected from the terminal, or connected incorrectly? → Correctly connect the cord. 	p. 5 - p. 8
	<ul style="list-style-type: none"> Is the speaker cord disconnected from the terminal, or connected incorrectly? → Correctly connect the speaker cord. 	p. 5 - p. 7
	<ul style="list-style-type: none"> Is the terminal or connecting cord pin plug dirty? → Wipe clean the terminal or plug. 	–
	<ul style="list-style-type: none"> Is the input (LINE 1 - LINE 5) of this product incorrectly set for the playback device? → Correctly select the input. 	p. 5 - p. 6
There is no sound from one speaker.	<ul style="list-style-type: none"> Is the connecting cord or speaker cord for one side disconnected? → Correctly connect the cord. 	p. 5 - p. 8
The volume level cannot be adjusted	<ul style="list-style-type: none"> Is the VOL. LED/MODE switch set to POWER AMP? → While in POWER AMP. mode, the volume level is fixed at approximately 20dB regardless of the VOLUME (level adjustment knob) position, so the volume level cannot be adjusted on this product. ○ To use this product as a pre-main amplifier, set the VOL. LED/MODE switch to NORMAL AMP. ○ To use this product as a power amplifier, perform volume level adjustments on the preamplifier (AV amplifier) side. 	p. 10
Sound comes out of the speakers even after turning off this product.	<ul style="list-style-type: none"> Immediately after turning off the power, sound may come out of the speakers while the OFF (WAITING) indicator is lit, but this is not a sign of breakage. → When playback is finished, first turn the volume of this product all the way down (or when using this product as a power amplifier, turn the volume of the preamplifier all the way down) and then shut off the power of this product. 	p. 9

Care and maintenance

For daily maintenance, use a polishing cloth to lightly wipe the front panel of this product. If it is very dirty, use a soft cloth moistened with neutral detergent watered down to 1/5-1/6 concentration and wipe off the dirt, then wipe dry with a dry cloth.

If alcohol, thinner, petroleum ether or insecticide adhere to the front panel it may be damaged, so use caution. Whenever using pre-moistened wipe, be sure to completely read the warning instructions that come with the wipe.

This product uses natural wood for its base chassis and insulator. Do not place it in direct sunlight or near a heater. The front panel may become discolored, and the product may be warped due to the natural wood contracting.

Specifications

■ **Amplifier**

Maximum output	120W × 2(4Ω), 90W × 2(6Ω), 60W × 2(8Ω)
Frequency response	10 Hz - 30 kHz ±1 dB (6W, 1Ω)
Harmonic distortion ratio.....	0.02 % (at 1 kHz, 80% output)
Input sensitivity, gain.....	300 mVrms, 37.3 dB (at MAX volume, 6Ω, 1 kHz, unbalanced input)
Line input terminals	Balanced input: 2 RCA unbalanced inputs: 3
Speaker terminal	1

■ **Power supply, other**

Power voltage.....	110, 120, 220, 230, 240 V AC, 50 Hz/60 Hz
Electrical consumption	With no signal: 15 W, during maximum output: 215 W (8 Ω, 100 Hz)
External dimensions.....	440 mm (width) × 125 mm (height) × 414 mm (depth)
Weight.....	16.0 kg

■ **Included items**

Power cord.....	1
Operation manual (this book)	1

* Due to improvements the above specifications and external appearance may be changed without notice.

Separately sold accessories

The following separately sold accessories are available.

■ **Remote control**

For details please contact us.

Warranty and after sales service

● About Warranty

Make sure that the name of your distributor and the date of purchase are written in the warranty. Read it carefully, and then keep it in a secure location. The warranty is valid for one year from the date of purchase.

● Malfunctions

If the product malfunctions in the course of normal use (use in accordance with the manual and safety precautions) during the warranty period, then we will repair the product free of charge. When you bring your product to the distributor for servicing, be sure to bring the warranty with you. See the guarantees in your warranty for details. We will repair malfunctions occurring after the warranty period has expired for a fee, in accordance with our servicing regulations.

Please note that we cannot provide any warranty or bear any liability for damage to any equipment that is connected to the unit resulting from incorrect use.

Contact Information

SPEC CORPORATION

TEL: +81-3-3660-0303

FAX: +81-3-3660-0333

E-mail: info-ex@spec-corp.co.jp

URL: spec-corp.co.jp

Terms of Warranty

1. If this product malfunctions during use in accordance with the manual, and during the warranty period, then please bring the product and this warranty to the store where you purchased it. It will be repaired free of charge.
2. If you cannot ask the store where you purchased it for repairs (e.g. if you have moved or the product was a gift), please consult with SPEC CORPORATION.
3. A fee will be charged for repairs in the following circumstances, even if it is during the warranty period.
 - (A) The product malfunctioned or was damaged due to user error or unauthorized repair or modification
 - (B) The product malfunctioned or was damaged due to dropping, etc. after purchase
 - (C) The product malfunctioned or was damaged due to fire, flooding, lightning and other weather phenomena, pollution, salt damage, or the like
 - (D) The product malfunctioned or was damaged due to other than normal use, such as long hours of continuous commercial use
 - (E) The main unit has been disassembled
 - (F) The text of the warranty has been changed or overwritten
 - (G) The malfunction was caused by another company's product
4. This warranty cannot be re-issued. Store it in a safe place, and do not lose it.

WARRANTY

RSA-M99 Real Sound Amplifier

Name	Telephone ()
Address	
Date of Purchase	Distributor Name & Telephone
Warranty Period (Months) One Year from Date of Purchase	

SPEC

SPEC CORPORATION

4th FL.NIHOMBASHI NAKAYA BUILDING,12-12 NIHOMBASHI-
KOBUNA-CHO,CHUO-KU,TOKYO 103-0024,JAPAN

© SPEC 2018